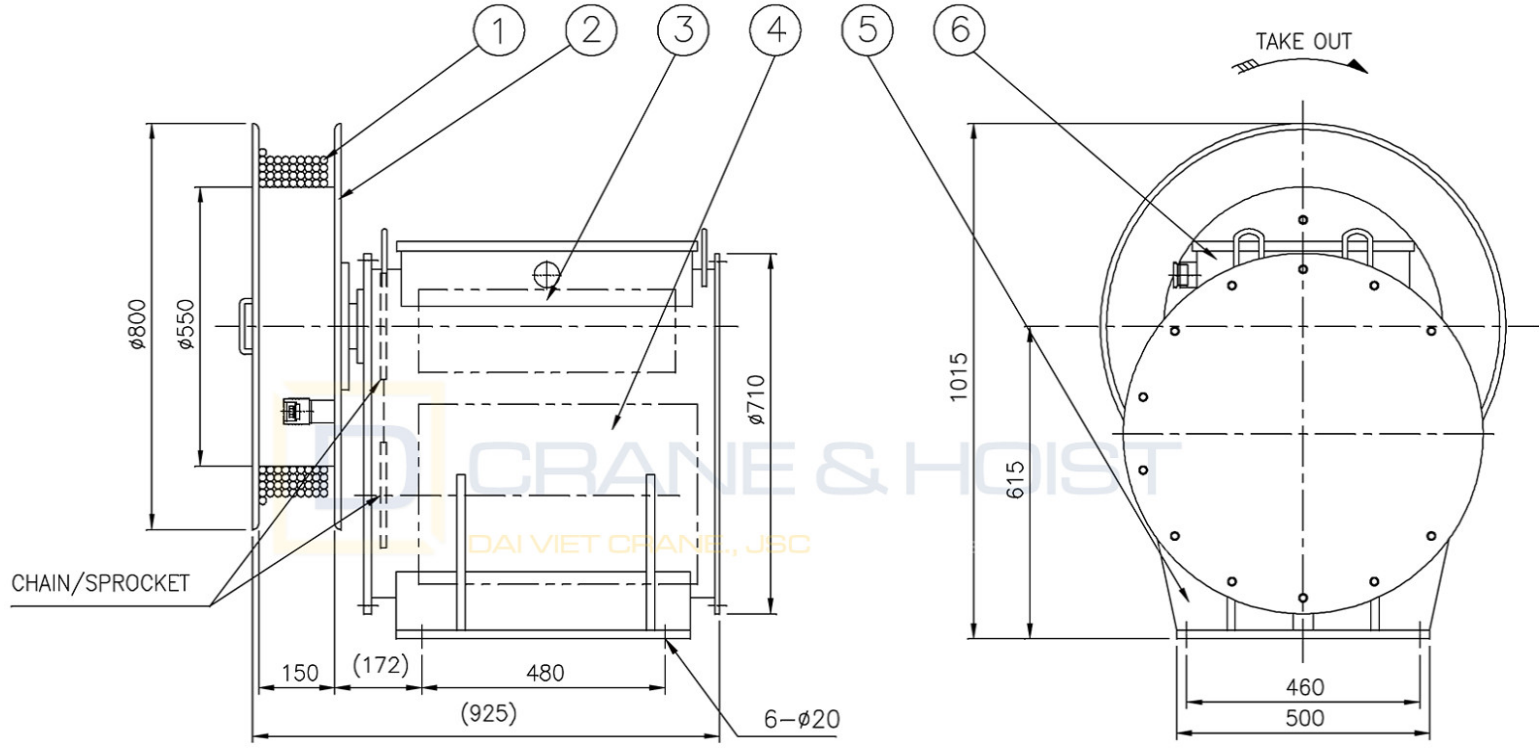
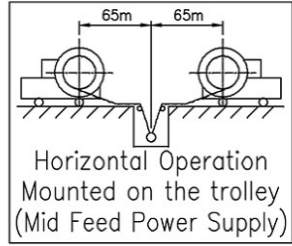
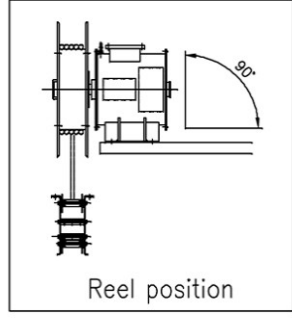
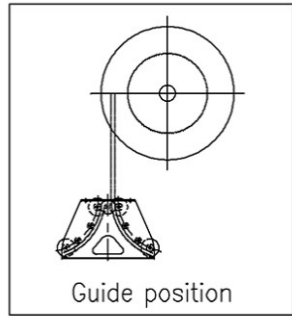


1	2	3	4	5	6
기타사항 C = 0.3-1.5 R = 0.5-1.2	기타사항 C = 0.3-1.5 R = 0.5-1.2	기타사항 C = 0.3-1.5 R = 0.5-1.2	기타사항 C = 0.3-1.5 R = 0.5-1.2	기타사항 C = 0.3-1.5 R = 0.5-1.2	기타사항 C = 0.3-1.5 R = 0.5-1.2
기타사항 C = 0.3-1.5 R = 0.5-1.2	기타사항 C = 0.3-1.5 R = 0.5-1.2	기타사항 C = 0.3-1.5 R = 0.5-1.2	기타사항 C = 0.3-1.5 R = 0.5-1.2	기타사항 C = 0.3-1.5 R = 0.5-1.2	기타사항 C = 0.3-1.5 R = 0.5-1.2

MARK	REASONABLE REVISIONS	DATE	DRAWN	APPR'D



**SPECIFICATION**

- 1. Cable
  - o Spec. : PNCT 4.0sq x 4c
  - o Size : approx.  $\phi$ 15.1 mm
  - o Weight : approx. 0.367 kg/m
  - o Length : 70 M (Including internal wiring)
- 2. Winding Length : 65 M + 65 M
- 3. Winding Speed : max. 10 M/Min.
- 4. Winding Torque : 6 kg.m
- 5. Slip Ring : 20A x 4P
- 6. Paint Color : M/No. 7.5 BG 6/1.5 (Indoor-60 um)
- 7. Setting Height : Max. 1.0 M from G.L.

6	-	TERMINAL BOX	SS400	1	-
5	-	FRAME ASSY	SS400	1	-
4	-	SPRING	ATX	10	-
3	-	SLIPRING	C3771	7P	-
2	-	DRUM ASSY	SS400	1	-
1	-	CABLE	PNCT	70M	-

ITEM	PART NO.	PART NAME	MATERIAL	Q'ty	REMARKS
PROJECTION 3rd ANGLE DIMENSION UNIT METRIC (mm) SCALE 1:1 MODEL EA-470-4					
CUSTOMER			PART NAME CABLE REEL		
MODEL COLOR 7.5 BG 6/1.5			PART NO. A745-7000		REV. NO.
DRAWING	DESIGN	CHECK	APPROVAL		
SIGN	O.Y.H	J.J.H	O.W.H		
DATE	2020.12.08	2020.12.08	2020.12.08		

